

Network II Lab 07

Scenario 01 – Basic configuration and console connection:

You are the Network Administrator at Ranet company. We have just installed new router to be our gateway. You have to do the basic configuration via Console Terminal (PC-PT) as below:

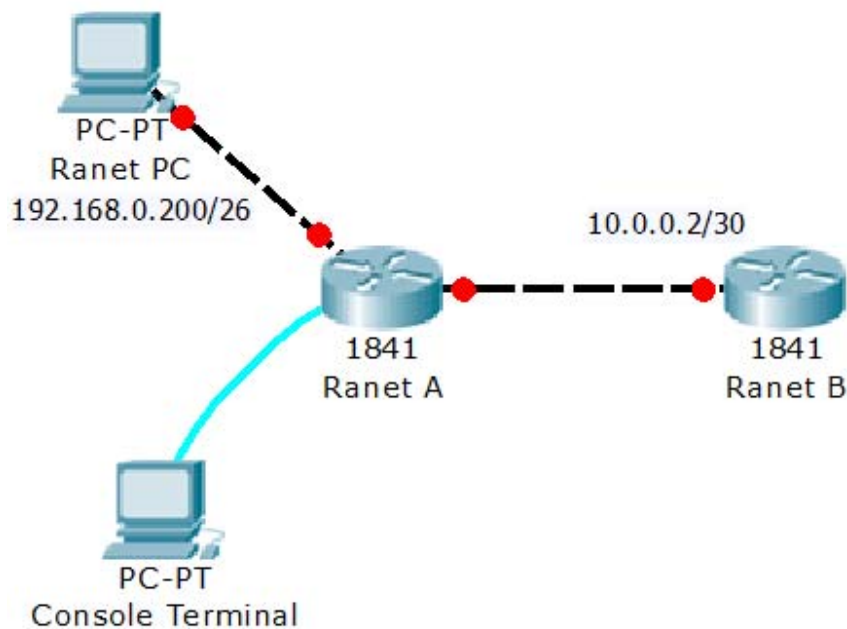
1. Set hostname to be "RanetA"
2. Set enable secret to be "ranetenablepass"
3. Set console password to be "ranetconsolepass"
4. Set telnet password to be "ranettelnetpass"
5. Set IP address of interface Fastethernet 0/0 to be the first address of network 10.0.0.0/30
6. Set IP address of interface Fastethernet 0/1 to be 192.168.0.254/26
7. Both interface Fastethernet 0/0 and 0/1 must be enable.

Goal:

After these configuration, you should be able to

1. Ping to 10.0.0.2 from Ranet A
2. Telnet from Ranet PC to Ranet A by using IP address 192.168.0.254 and telnet password as above.

Topology:





Steps:

[On Ranet A (via console)] :

(Go to Desktop Tab > Terminal)

```
Router>en
```

```
Router#conf t
```

Enter configuration commands, one per line. End with CNTL/Z.

```
Router(config)#hostname RanetA
```

```
RanetA(config)#enable secret ranetenablepass
```

Set password for privilege mode, so when you typed enable command

```
(router)> enable
```

it would prompt for password and you will supply the secret password

```
RanetA(config)#line con 0
```

Start configuring console connection

```
RanetA(config-line)#password ranetconsolepass
```

```
RanetA(config-line)#login
```

setting console password on cisco router/switch. When you connect your pc with console port of your router. You need to supply this password to enter for further configuration.

```
RanetA(config-line)#line vty 0 4
```

Configuring telnet connection (5 lines from 0 to 4) some IOS has 16 telnet lines so you may write

```
Line vty 0 15
```

Or two blocks

```
Line vty 0 4
```

```
Line vty 5 15
```

```
RanetA(config-line)#password ranettelnetpass
```

```
RanetA(config-line)#login
```

setting telnet password on cisco router/switch. You need to supply this password to access router using telnet

```
RanetA(config-line)#int fa0/0
```

Start configuring fast Ethernet port

```
RanetA(config-if)#no sh
```

no shutdown, to enable port

```
%LINK-5-CHANGED: Interface FastEthernet0/0, changed state to up
```

```
%LINEPROTO-5-UPDOWN: Line protocol on Interface FastEthernet0/0, changed state to up
```

```
RanetA(config-if)#ip add 10.0.0.1 255.255.255.252
```

Set ip to 10.0.0.1

```
RanetA(config-if)#int fa0/1
```

```
RanetA(config-if)#no sh
```

```
%LINK-5-CHANGED: Interface FastEthernet0/1, changed state to up
```

```
%LINEPROTO-5-UPDOWN: Line protocol on Interface FastEthernet0/1, changed state to up
```

```
RanetA(config-if)#ip add 192.168.0.254 255.255.255.192
```



```
RanetA(config-if)#  
RanetA#  
%SYS-5-CONFIG_I: Configured from console by console  
RanetA#copy run start  
Destination filename [startup-config]?  
Building configuration...  
[OK]
```

the abbreviated form of the **copy system:running-config nvram:startup-config**

```
RanetA#ping 10.0.0.2  
Type escape sequence to abort.  
Sending 5, 100-byte ICMP Echos to 10.0.0.2, timeout is 2 seconds:  
.!!!!  
RanetA#
```

[On Ranet B]:

goto [Config>FastEthernet0/0]

Router1

Physical Config CLI

GLOBAL

Settings

Algorithm Settings

ROUTING

Static

RIP

SWITCHING

VLAN Database

INTERFACE

FastEthernet0/0

FastEthernet0/1

FastEthernet0/0

Port Status On

Bandwidth Auto

10 Mbps 100 Mbps

Duplex Auto

Full Duplex Half Duplex

MAC Address 00D0.9770.9B01

IP Address 10.0.0.2

Subnet Mask 255.255.255.252

Tx Ring Limit 10

Equivalent IOS Commands

```
Router(config-if)#ip address 10.0.0.2 255.0.0.0  
Router(config-if)#ip address 10.0.0.2 255.255.255.252  
Router(config-if)#
```

Or using CLI

(Go to Desktop Tab > Terminal)

Router>en

Router#conf t

Enter configuration commands, one per line. End with CNTL/Z.

Router(config)#hostname RanetB

RanetB(config-line)#int fa0/0

RanetB(config-if)#no sh

RanetB(config-if)#ip add 10.0.0.2 255.255.255.252

Now return to Console Terminal of RnetA router and ping 10.0.0.2 again

RanetA>ping 10.0.0.2

Type escape sequence to abort.

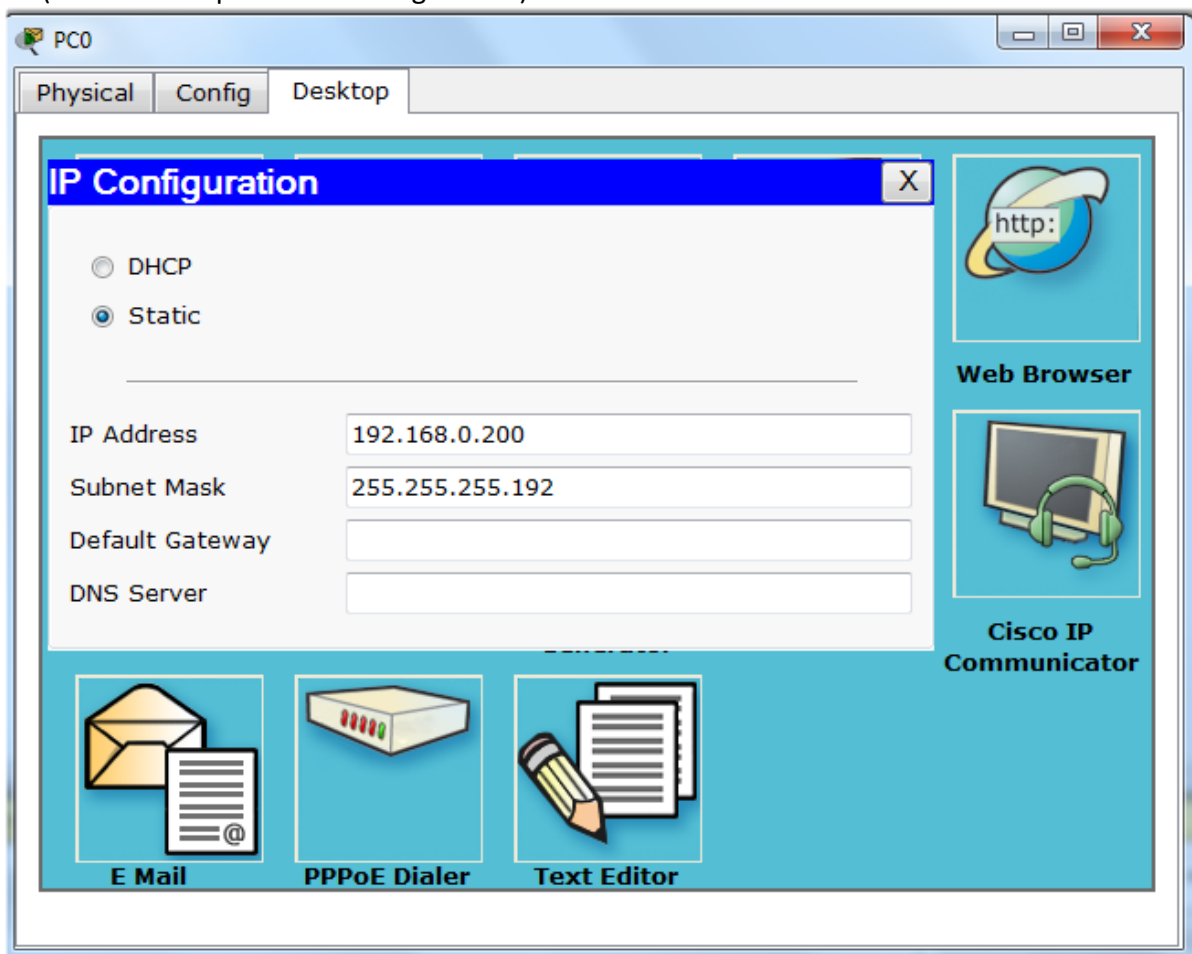
Sending 5, 100-byte ICMP Echos to 10.0.0.2, timeout is 2 seconds:

.!!!!

Success rate is 80 percent (4/5), round-trip min/avg/max = 3/3/4 ms

[On Ranet PC]:

(Go to Desktop Tab > IP Configuration)





جامعة الأهرام الكندية
AHRAM CANADIAN UNIVERSITY

(Go to Desktop Tab > Command Prompt)

Packet Tracer PC Command Line 1.0

PC>telnet 192.168.0.254

telnet access to Rnet A

Trying 192.168.0.254 ...Open

User Access Verification

Password: ranettelnetpass

RanetA>