

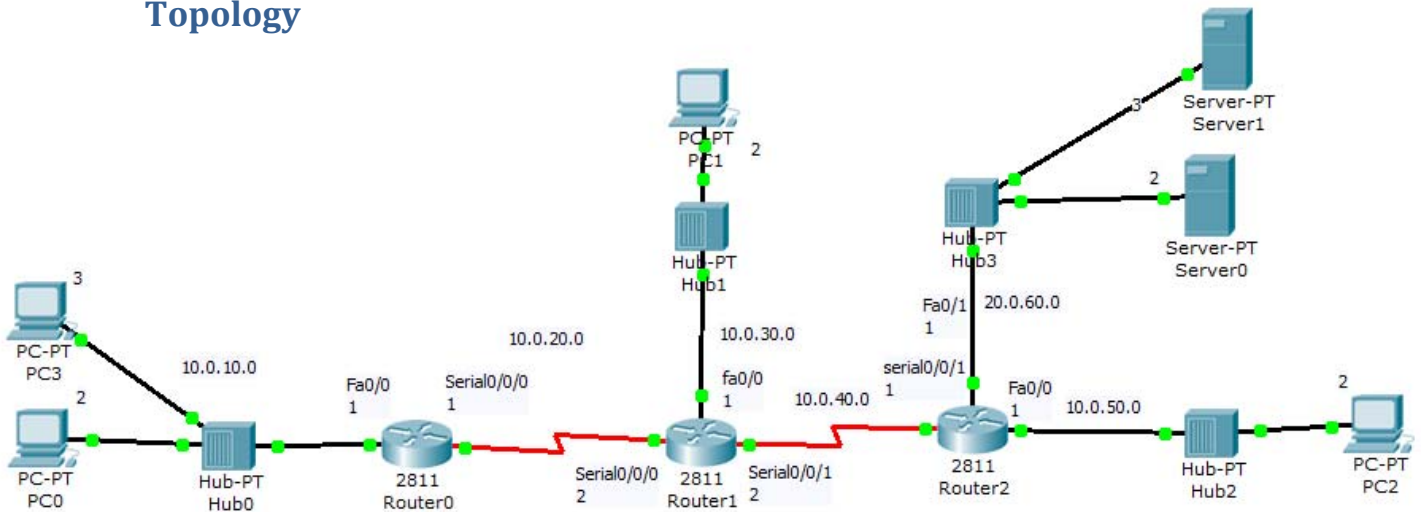
Wireless Lab 04

IP/TCP Layers Network Security II

Equipment

#	Item
4	PCs
4	Hubs
4	Router 2811
2	Server

Topology



2. Extended Access list - testing

Reboot before configuring router 2

Part 1:

```

R en
o config t
u access-list 101 deny ip 10.0.10.0 0.0.0.255 host 3.3.3.3
t access-list 101 permit ip any host 3.3.3.3
e interface serial0/0/1
r ip access-group 101 in
2 end
  
```

Testing	PC0	Ping 3.3.3.3 Ping 20.0.60.2
	PC1	Ping 3.3.3.3 Ping 20.0.60.2
	PC2	Ping 3.3.3.3 Ping 20.0.60.2
	Server 0	Ping 3.3.3.3 Ping 10.0.10.2 Ping 10.0.30.2



	Ping 10.0.50.2
--	----------------

Reboot before configuring router 2

Part 2:

```

R2> en
R2> config t
R2> access-list 101 deny icmp 10.0.30.0 0.0.0.255 20.0.60.0 0.0.0.255 echo
R2> access-list 101 permit icmp any 20.0.60.0 0.0.0.255 echo
R2> access-list 101 permit icmp any 20.0.60.0 0.0.0.255 echo-reply
R2> access-list 102 permit icmp any any echo-reply
R2> access-list 102 permit icmp any any echo

R2> interface FA0/1
R2> ip access-group 101 OUT
R2> ip access-group 102 in
R2> end
  
```

Testing	PC0	Ping 20.0.60.2
	PC1	Ping 20.0.60.2
	PC2	Ping 20.0.60.2
	Server 0	Ping 10.0.10.2 Ping 10.0.30.2 Ping 10.0.50.2

Reboot before configuring router 2

Part 3:

```

R2> en
R2> config t
R2> access-list 104 deny tcp host 10.0.10.2 host 3.3.3.3 eq telnet
R2> access-list 104 permit tcp any host 3.3.3.3 eq telnet
R2> end

R2> en
R2> config t
R2> interface serial0/0/1
R2> ip access-group 104 in
R2> end
  
```

Testing	PC0	telnet 3.3.3.3 ping 3.3.3.3
	PC3	telnet 3.3.3.3 ping 3.3.3.3
	PC1	telnet 3.3.3.3 ping 3.3.3.3



	PC2	telnet 3.3.3.3 ping 3.3.3.3
	Server 0	telnet 3.3.3.3 ping 3.3.3.3

Reboot before configuring router 2

Part 4:

```
R en
o config t
u access-list 105 deny tcp 10.0.10.0 0.0.0.255 host 3.3.3.3 eq telnet
t access-list 105 permit tcp any host 3.3.3.3 eq telnet
e
r end
2
en
config t
interface serial0/0/1
ip access-group 105 in
end
```

Testing	PC0	telnet 3.3.3.3 ping 3.3.3.3
	PC3	telnet 3.3.3.3 ping 3.3.3.3

Reboot before configuring router 2

Part 5:

```
R en
o config t
u access-list 107 deny tcp 10.0.30.0 0.0.0.255 host 20.0.60.2 eq 80
t access-list 107 permit tcp any host 20.0.60.2 eq 80
e access-list 108 permit tcp host 20.0.60.2 any gt 1023
r end
2
config t
interface serial0/0/1
ip access-group 107 in
ip access-group 108 out
end
config t
Interface fa0/1
ip access-group 108 in
ip access-group 107 out
end
```



Testing	PC0	In web browser open "20.0.60.2" in email client try to send or receive email ping 20.0.60.2 ping 3.3.3.3
	PC1	In web browser open "20.0.60.2" in email client try to send or receive email ping 20.0.60.2 ping 3.3.3.3
	PC2	In web browser open "20.0.60.2" in email client try to send or receive email ping 20.0.60.2 ping 3.3.3.3