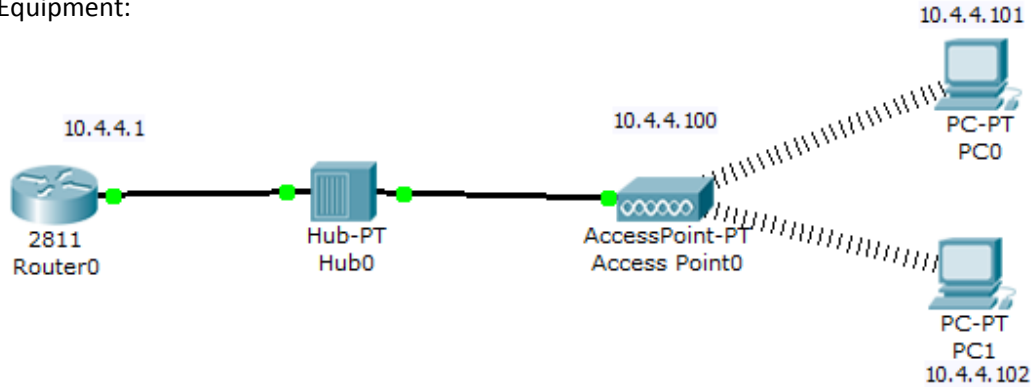


## Wireless Lab 07

### Extend common distribution system using Access Points, and Routers

#### 1. Using Access point

Equipment:



Wireless AP	<b>AP</b>	
	IP	10.4.4.100
	Subnet mask	255.255.255.0
	GW	10.4.4.1
	SSID	AP02
	Country	Egypt
	Mode	Access Point
	DHCP	on [10.4.4.101 – 10.4.4.110] GW : 10.4.4.1
PC0	<b>PC0</b>	
	IP settings	DHCP
	IP	-
	Subnet mask	-
	Gateway	-
PC1	<b>PC1</b>	
	IP settings	DHCP
	IP	-
	Subnet mask	-
	Gateway	-

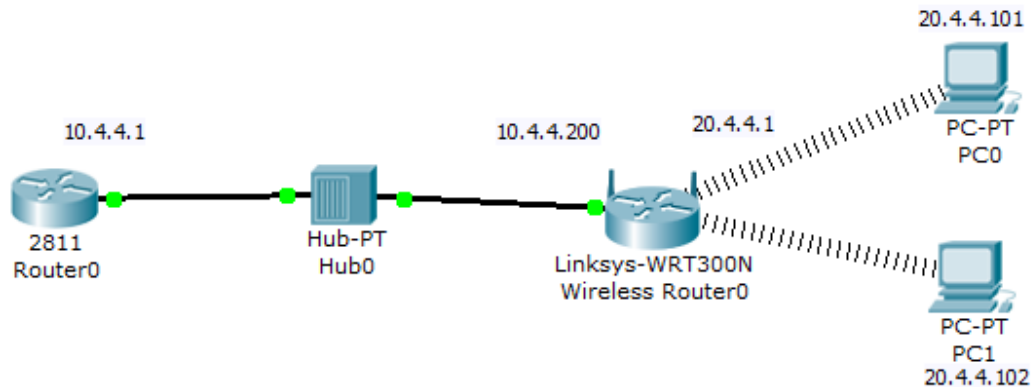
#### Testing

Access Point	Ping [pc0 ip] Ping [pc1 ip] Ping 10.4.4.1 Ping 8.8.8.8
--------------	---

Pc0	Ipconfig Ping [pc1 ip] Ping 20.4.4.1 Ping 10.4.4.100 Ping 10.4.4.1 Ping 8.8.8.8
-----	--

Pc1	Ipconfig Ping [pc0 ip] Ping 20.4.4.1 Ping 10.4.4.100 Ping 10.4.4.1 Ping 8.8.8.8
-----	--

## 2. Using wireless Router



Router	
Network IP	20.4.4.1
Subnet mask	255.255.255.0
DHCP	on [20.4.4.101 – 20.4.4.120]
Internet IP	10.4.4.200
Subnet Mask	255.255.255.0
GW	10.4.4.1
SSID	Router01
Country	Egypt

PC0	
IP settings	Dynamic
IP	-
Subnet mask	-
Gateway	-



<b>PC2</b>	
IP settings	Static
IP	Dynamic
Subnet mask	-
Gateway	-

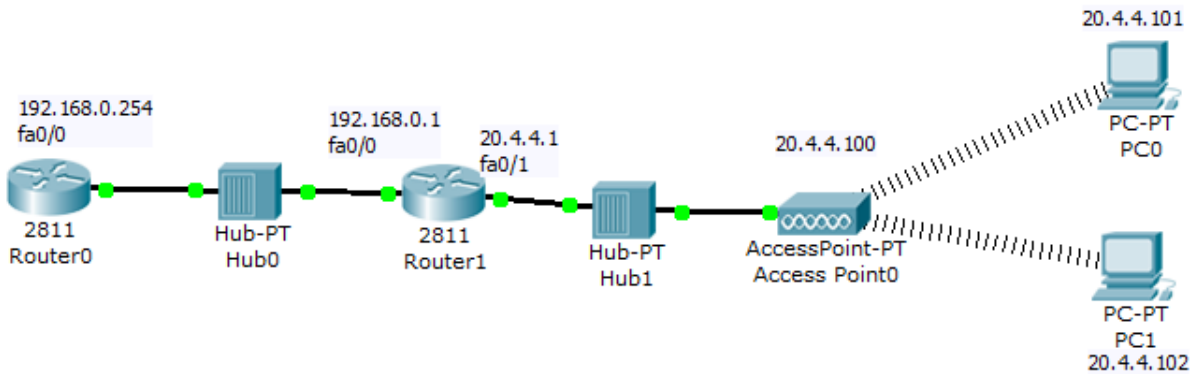
### Testing

Wireless Router	Ping [pc0 ip] Ping [pc1 ip] Ping 20.4.4.1 Ping 10.4.4.200 Ping 10.4.4.1 Ping 8.8.8.8
-----------------	---

Pc0	Ipconfig Ping [pc1 ip] Ping 20.4.4.1 Ping 10.4.4.200 Ping 10.4.4.1 Ping 8.8.8.8
-----	--

Pc01	Ipconfig Ping [pc0 ip] Ping 20.4.4.1 Ping 10.4.4.200 Ping 10.4.4.1 Ping 8.8.8.8
------	--

### 3. Access Point and wired Router



Router 1	<p>Static route  Destination: 20.4.4.0  Mask: 255.255.255.0  Next hop: 192.168.0.254</p>
Router 1	<pre> en config t interface fa0/0 ip address 192.168.0.1 255.255.255.0 no sh end  config t interface fa0/1 ip address 20.4.4.1 255.255.255.0 no sh end  config t ip route 192.168.0.0 255.255.255.0 fa0/0 ip route 20.4.4.0 255.255.255.0 fa0/1 ip route 0.0.0.0 0.0.0.0 192.168.0.254 end </pre>



Wireless AP	<b>AP</b>	
	IP	20.4.4.100
	Subnet mask	255.255.255.0
	GW	10.4.4.1
	SSID	AP02
	Country	Egypt
	Mode	Access Point
	DHCP	on [20.4.4.101 – 20.4.4.110] GW : 10.4.4.1
PC0	<b>PC0</b>	
	IP settings	DHCP
	IP	-
	Subnet mask	-
	Gateway	-
PC1	<b>PC1</b>	
	IP settings	DHCP
	IP	-
	Subnet mask	-
	Gateway	-

### Testing

Router2	Ping 20.4.4.1 Ping 20.4.4.100 Ping [pc0 ip] Ping [pc1 ip]  Ping 192.168.0.254 Ping 192.168.0.1 Ping 8.8.8.8
---------	--

Access Point	Ping 20.4.4.1 Ping 20.4.4.100 Ping [pc0 ip] Ping [pc1 ip]  Ping 192.168.0.254 Ping 192.168.0.1 Ping 8.8.8.8
--------------	--



Pc0	Ipconfig Ping 20.4.4.1 Ping 20.4.4.100 Ping [pc1 ip]  Ping 192.168.0.254 Ping 192.168.0.1 Ping 8.8.8.8
-----	---

Pc1	Ipconfig Ping 20.4.4.1 Ping 20.4.4.100 Ping [pc0 ip]  Ping 192.168.0.254 Ping 192.168.0.1 Ping 8.8.8.8
-----	---

Browes [www.google.com](http://www.google.com)

What is the problem and how to solve it?